

ZERMATT VM CONFIGURATION MANUAL		Pages (9)
Author : Dipayan Sengupta	Version: Zermatt Version2.6	Date :30-08-2011

Zermatt VM Configuration Guide (Zermatt V2.6.2)

Whilst all reasonable care has been taken to ensure that the details are true and not misleading at the time of publication, no liability whatsoever is assumed by Automature LLC, or any supplier of Automature LLC, with respect to the accuracy or any use of the information provided herein.

Any license, delivery and support of software require entering into separate agreements with Automature LLC.

This document may contain confidential information and may not be modified or reproduced, in whole or in part, or transmitted in any form to any third party, without the written approval from Automature LLC.

Copyright © 2010 Automature LLC

All rights reserved.

ZERMATT VM CONFIGURATION MANUAL		Pages (9)
Author : Dipayan Sengupta	Version: Zermatt Version2.6	Date :30-08-2011

Revision History

Ver.	Date	Name	Description of Changes
2.6	30-08-2011	Dipayan Sengupta	First Edition
2.6	02-09-2011	Dipayan Sengupta	Second Edition

ZERMATT VM CONFIGURATION MANUAL		Pages (9)
Author : Dipayan Sengupta	Version: Zermatt Version2.6	Date :30-08-2011

Contents

1 Introduction.....	4
Document Purpose.....	4
Intended Audience.....	4
2 Configuration Instructions.....	5
Static IP set up.....	5
TWiki Configuration.....	7
MySQL configuration.....	9

ZERMATT VM CONFIGURATION MANUAL		Pages (9)
Author : Dipayan Sengupta	Version: Zermatt Version2.6	Date :30-08-2011

1 Introduction

- Zermatt is a web server application that has been developed using Perl, MySQL, Apache, TWiki and TML (TWiki Markup Language). Zermatt helps you to plan and report the QA processes of an organization.
- **VMware Player** is a freeware virtualization software package from [VMware, Inc](http://www.vmware.com)

Document Purpose

- The Configuration Guide provides step by step instructions for configuring Zermatt in a Virtual Machine.

Intended Audience

- This Configuration Guide is intended for system administrators, who would be installing and managing Zermatt.

ZERMATT VM CONFIGURATION MANUAL		Pages (9)
Author : Dipayan Sengupta	Version: Zermatt Version2.6	Date :30-08-2011

2 Configuration Instructions

Static IP set up

- Open Web Browser and go the URL <https://localhost:10000> .
- Log in as **automature** as username and **automature** as password.



- From the left side bar navigate in the following way → **Networking-> Network Configuration.**
- Navigate to **Network Interfaces.**



ZERMATT VM CONFIGURATION MANUAL		Pages (9)
Author : Dipayan Sengupta	Version: Zermatt Version2.6	Date :30-08-2011

- There are two tabs namely **Active now** and **Activated at boot**. In the **Active now** page, check the checkbox for **eth0** and click on **De-Activate Selected Interfaces** right below the table. The status for **eth0** should be down.

Module Index

Network Interfaces

Active Now | **Activated at Boot**

Interfaces listed in this table are currently active on the system. In most cases, you should edit them under the **Activated at Boot** tab.

Select all. | Invert selection. | Add a new interface.

Name	Type	IPv4 address	Netmask	IPv6 address	Status
<input checked="" type="checkbox"/> eth0	Ethernet	192.168.0.2	255.255.255.0		Up
<input type="checkbox"/> lo	Loopback	127.0.0.1	255.0.0.0		Up

Select all. | Invert selection. | Add a new interface.

De-Activate Selected Interfaces

Return to network configuration

- Go to the next tab **Activated at Boot** and click on **eth0** and you can see the edit boot up interface page.
- Select your desired IPv4 address.

For example, if you want to make it static, click on the radio button of Static Configuration and put the desired IPv4 address say 192.168.205.32 and netmask 255.255.255.0. Click on Save button right below the table.

Module Index

Edit Bootup Interface

Boot Time Interface Parameters

Name: eth0 Activate: Yes No

IPv4 address

- From DHCP
- From BOOTP
- Static configuration**
 - IPv4 address: 192.168.205.32
 - Netmask: 255.255.255.0
 - Broadcast: Automatic 192.168.205.255

IPv6 addresses

- IPv6 disabled**
- From IPv6 discovery
- Static configuration

IPv6 address	Netmask
	64

Virtual interfaces 0 (Add virtual interface) **Hardware address** Default

Save Save and Apply Delete and Apply Delete

ZERMATT VM CONFIGURATION MANUAL		Pages (9)
Author : Dipayan Sengupta	Version: Zermatt Version2.6	Date :30-08-2011

- You will be automatically redirected to the **Activated at Boot** tab. Select **eth0** checkbox and click on **Apply Selected Interfaces**.

Module Index

Network Interfaces

Active Now **Activated at Boot**

Interfaces listed in this table will be activated when the system boots up, and will generally be active now too.

Select all. | Invert selection. | Add a new interface.

Name	Type	IPv4 address	Netmask	IPv6 address	Activate
<input checked="" type="checkbox"/> eth0	Ethernet	192.168.205.32	255.255.255.0		<input checked="" type="checkbox"/>
<input type="checkbox"/> lo	Loopback	Automatic	Automatic		<input type="checkbox"/>

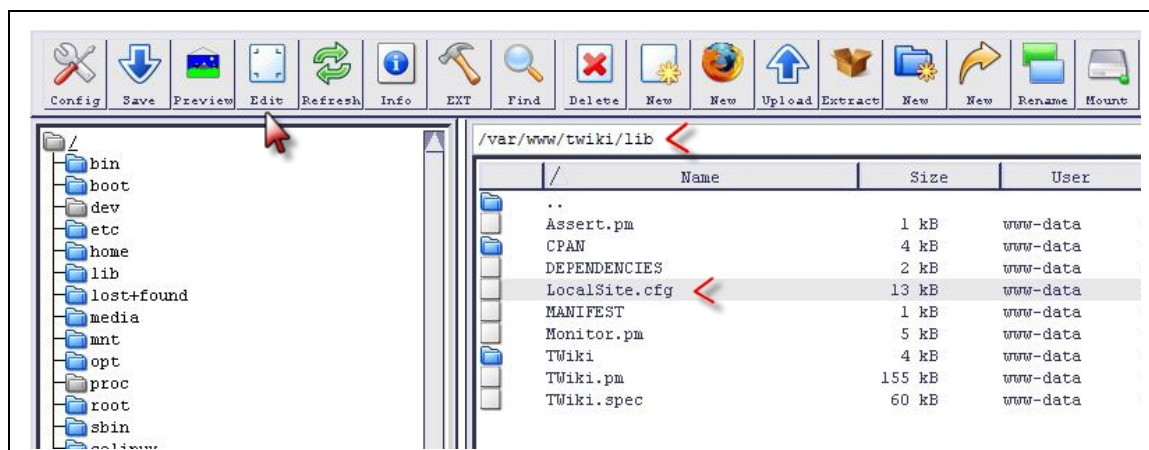
Select all. | Invert selection. | Add a new interface.

[Return to network configuration](#)

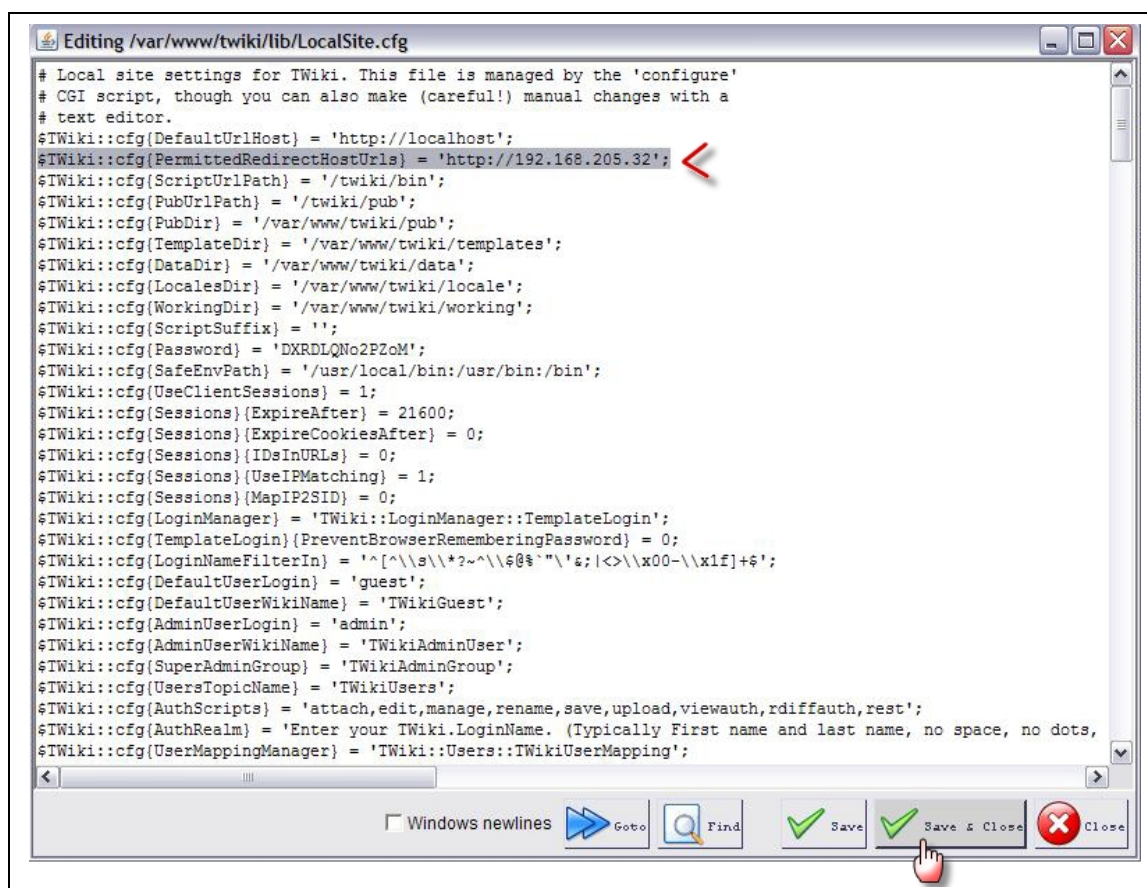
ZERMATT VM CONFIGURATION MANUAL		Pages (9)
Author : Dipayan Sengupta	Version: Zermatt Version2.6	Date :30-08-2011

TWiki Configuration

- Open Web Browser and go the URL <https://localhost:10000> .
- From the left side bar navigate in the following way →
- **File Manager-> var->www>twiki>lib**
- Select **LocalSite.cfg** and click on edit.



- Navigate to General Path Settings-> Permitted Redirect Host URLs.
- Enter your static IP.
- Click on **Next** at the bottom of the page and click **Save** on the confirmation screen.

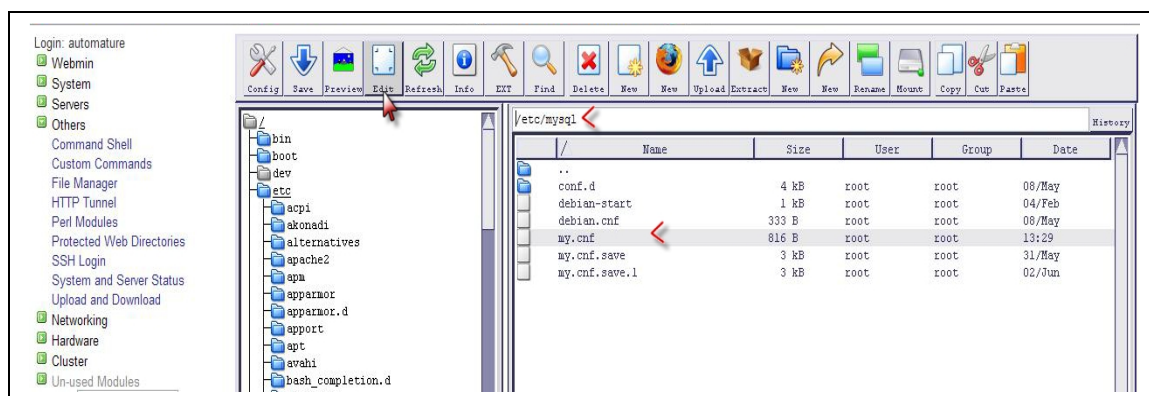


ZERMATT VM CONFIGURATION MANUAL		Pages (9)
Author : Dipayan Sengupta	Version: Zermatt Version2.6	Date :30-08-2011

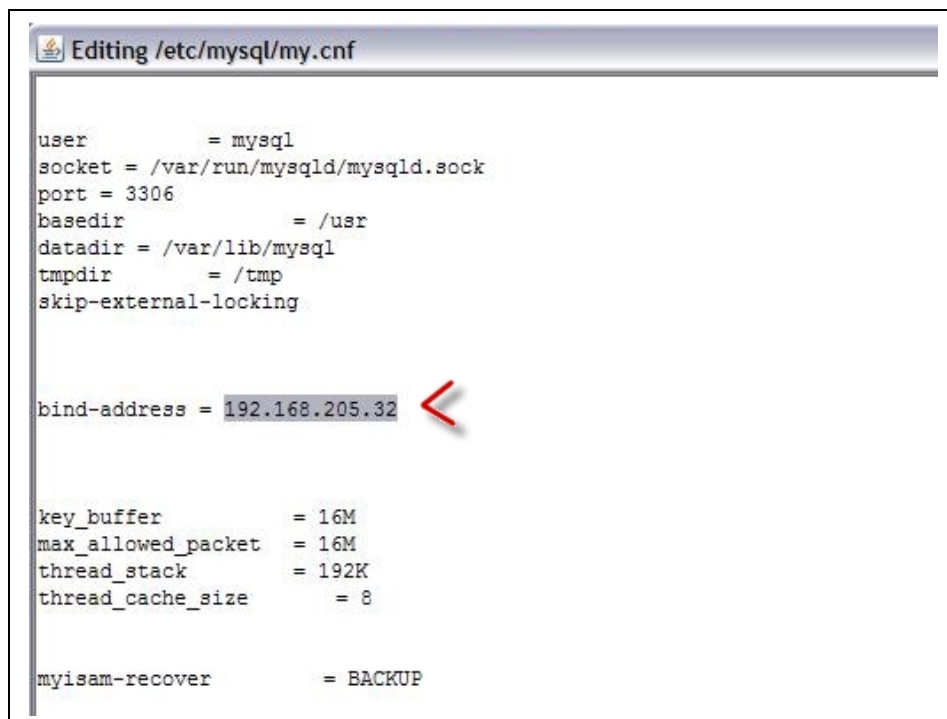
MySQL configuration

This is only required when you need to report to a database using Zug.

- Open Web Browser and go the URL <https://localhost:10000> .
- From the left side bar navigate in the following way →
File Manager-> etc->mysql.
- Select **my.cnf** and click on edit.



- Go the line **Bind Address** and change the static IP and save the file.



- Close the browser.

Your Configuration is now complete.